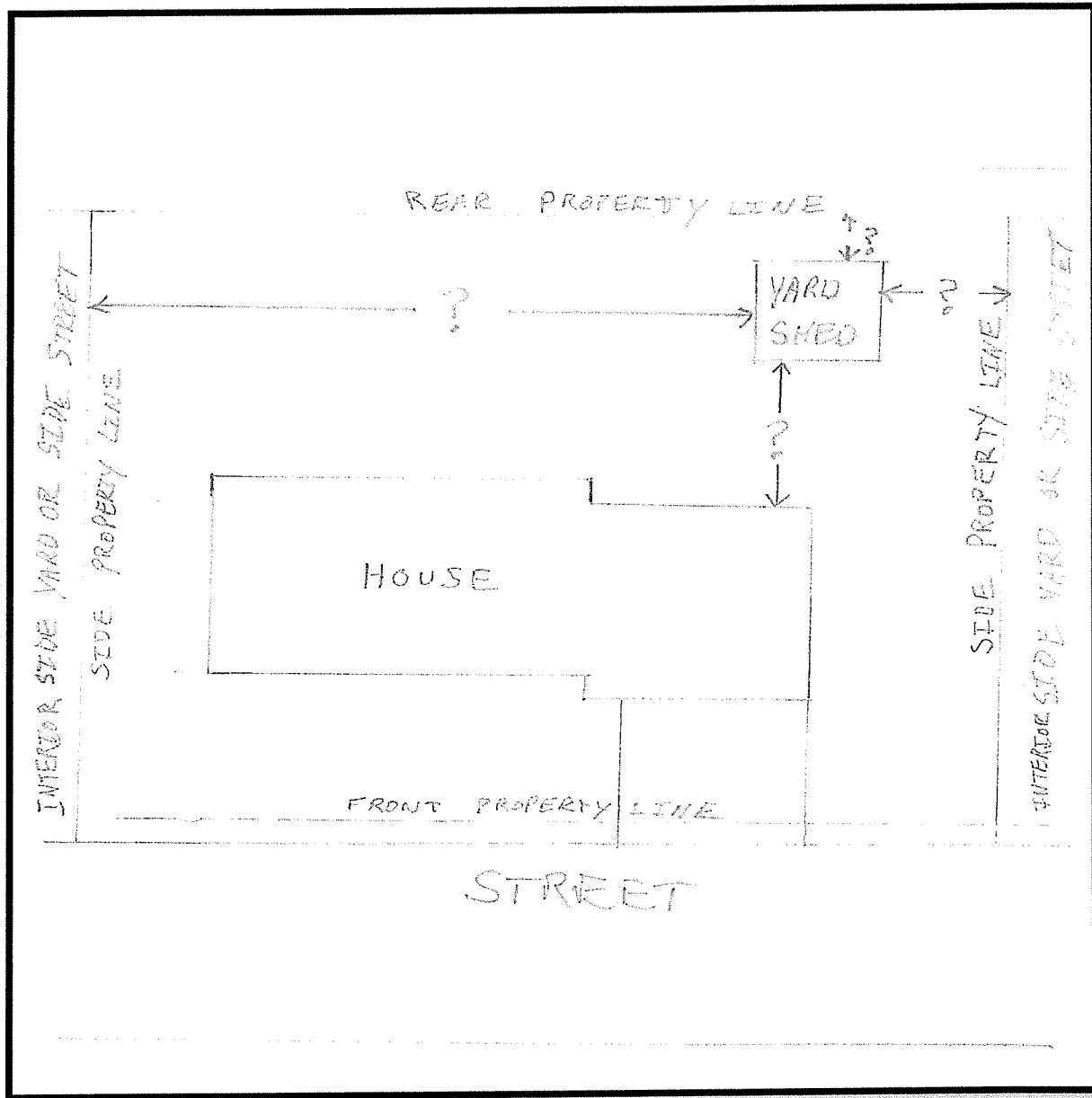


SAMPLE SITE PLAN



(d) **Utility or Storage Sheds.** In any residential district, one utility shed and/or storage shed is permitted. The utility shed and/or storage shed shall be placed on a cement pad of at least four-inch thickness and such utility or storage shed shall be secured thereto. Utility or storage sheds shall be limited to 120 square feet and not to exceed eight feet in height. (Ord. 78-1992. Passed 9-28-92.)